



AZIMUT GRANDE 35 METRI / 2020 / € 9,500,000 EX VAT



AZIMUT
Grande

- Watch Video -



- The Yacht -



- The Yacht -



- The Yacht -



- The Yacht -



- The Yacht -



- The Yacht -



- The Yacht -



- The Yacht -



- Wheel House -



- Saloon Maindeck -



- Saloon Maindeck -



- Saloon Maindeck -



- Saloon Maindeck -



- Saloon Maindeck -



- Dining Area -



- Galley -



- Coridor -



- Coridor -



- Owners Cabin -



- Owners Cabin -



- Owners Cabin -



- Owners Cabin -



- Owners Cabin -



- Owners Cabin Bathroom -



- Owners Cabin Bathroom -



- Owners Cabin Bathroom -



- VIP Cabin -



- VIP Cabin -



- VIP Cabin Bathroom -



- Guests Cabin -



- Guests Cabin -



- Guests Cabin Bathroom -



- Guests Cabin Bathroom -



- Guests Cabin Bathroom -



- Massage Room -



- Aft Cockpit -



- Aft Cockpit -



- Upper Deck -



- Upper Deck -



- Upper Deck -



- Upper Deck -



- Sundeck -



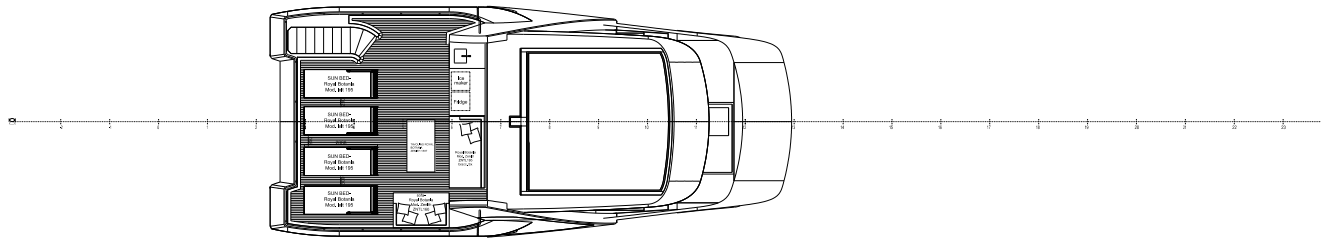
- Foredeck Lounge & Jacuzzi -



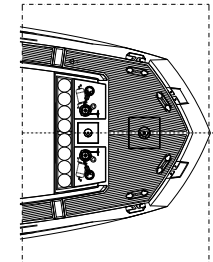
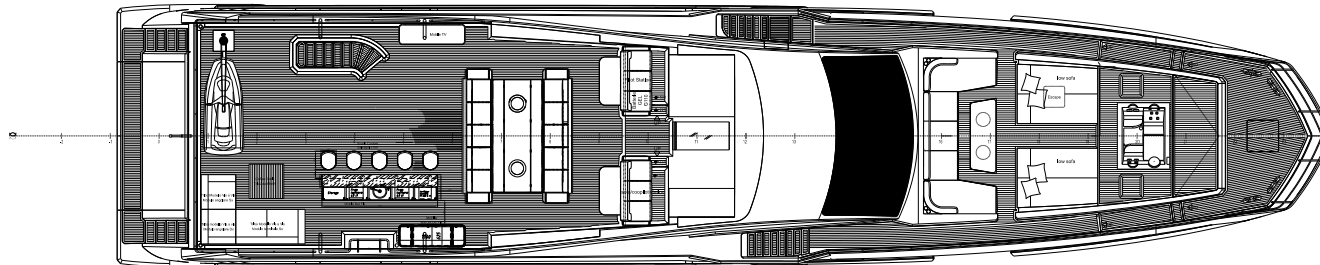
- Foredeck Lounge & Jacuzzi -

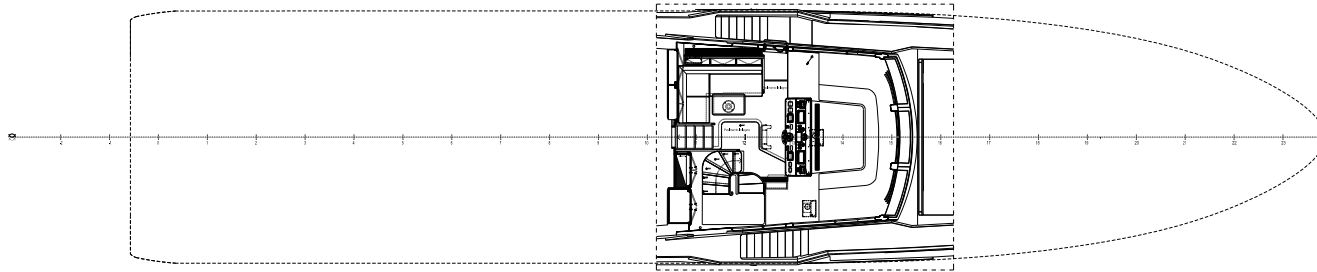


- Laundry Room -

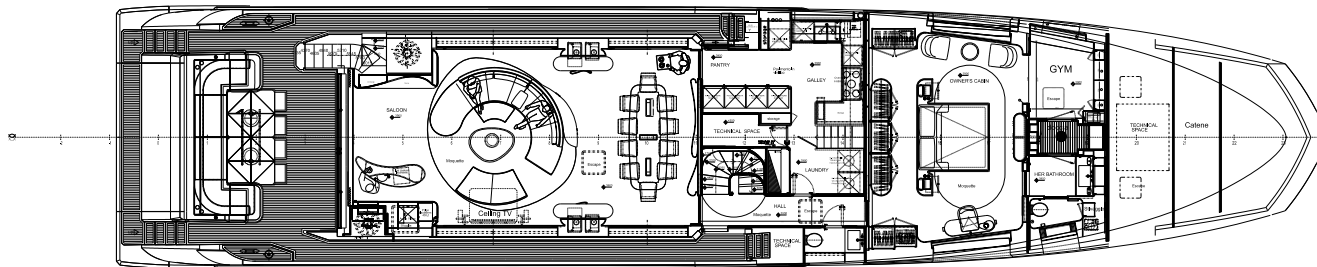


Sundeck

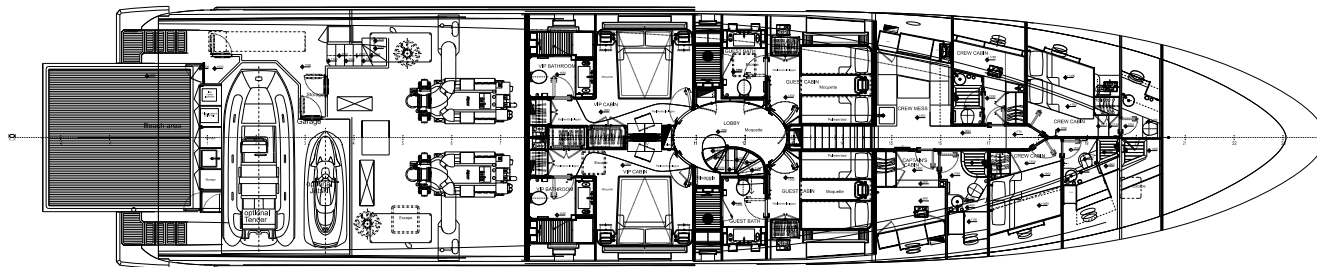




Raised pilot house



Main deck



Lower deck

SPECIFICATIONS

- LOA: 35 m
- Water line length at full load: 28.5m
- Beam max: 7.50 m
- Draft: 1.91 m
- Displacement (at full load): 154 t
- Fuel capacity: 18.000 l
- Fresh Water: 3.000 l
- Building material: GRP and Carbon Fiber

ENGINES

- 2x2.400 mHP (1790kW) MTU 16V 2000 M93

PERFORMANCE

- Maximum speed: up to 26 kn
- Cruising speed: 21 kn

ACCOMMODATION

- Cabins: 5+4 crew
- Berths: 10+6 crew
- Head compartments: 6+4 crew

GENERAL

- RINA Pleasure classification
- Hard top with sliding soft top on flybridge
- Fin "Zero Speed" Stabilisers
- Electric stern thruster
- Predisposition for central vacuum system
- Additional soundproof insulation between salon and engine room
- Additional soundproof insulation in master cabin - aft bulkhead and ceiling
- Double racor filters for generators
- Electric main door in salon
- Duplex water maker instead of std
- Cockpit shade (manual)

EXTERIOR

- Complete painted hull and superstructure, including antennas (Awlgrip/Awlcraft, not metallic colours) - WHITE
- Telescopic handrails on both sides of the gangway (stainless steel)
- Fenders - F10
- All exterior tables - natural teak to be confirmed
- Water connection - bow, fly, beach, garage

Fwd Cockpit

- Cover for bow sitting area, with poles in carbon fibre and three awnings
- N.2 awnings instead of n.3, n.1 will cover sunbeds + sofa, n.1 will cover the sofa
- Wood cover for jacuzzi low as possible
- Bow hand shower
- Bow table - same as 35/19
- Beach Area

Layout Std

- Beach Area loose furniture: 3 or 4 sunbeds

Sundeck

- Additional sundeck in lieu of std aft hard top, including bar furniture with sink, icemaker and fridge 49l, 1 sofa (2 seats), 1 sofa (3 seats) and 4 loungers:
- Sofas and chaise longue as per picture in the 35m brochure
- Teak coffee table as per picture in the 35m brochure

EXTERIOR

Aft Cockpit

- N.4 folding chairs white Sifas Oskar
- Flybridge
- Teak flooring on all flybridge - 12 mm
- Upgrade BBQ: Bbq Kenyon Big American Grill in the stbd cabinet in the flybridge
- Bar + 6 swivelling stools (same as 35/21) on flybridge:
- Bar as per 35-21, rotated, stbd side, longitudinal position (n.1 sink, 1 fridge, 1 additional fridge (see dedicated extra in appliances) n.5 teak and S/S stools as per picture shown, no seat cushion
- Aft seating area on fly: L shaped sofa with teak base, backrest in less pieces as possible, one next to the other

INTERIOR

- Internal layout as per std
- Mattresses as per 30-33

Saloon

- Furniture at main entrance std, laquered 100% gloss RAL 5001
- Loose furniture (sofa, coffee table, dining table and dining chairs) as per Salvagni std decor with the following modifications:
- sofa base laquered in RAL5000 100%gloss+small details in palladium colour
- n.10 dining chairs, all with armrests
- Cabinet fwd salon with details in palladium colour
- Central columns white laquered instead of mahoghany

INTERIOR

Master's Cabin

- Portside bathroom customized in order to obtain an empty space for a gym utilization, no door between this area and the cabin. See relevant drawing
- Shower doors as per std
- Aft Cabinets (stbd and portside) doors in light wood instead of mahogany (cabinet inside remains in dark wood)
- Lobby LD
- VIP and guests' cabins doors in light wood instead of dark wood, frames in dark wood.
- VIP cabins
- Vanity stools legs in RAL 5000 100% gloss

Guest cabins

- Additional folding bed in starboard guest cabin - not available in presence of double bed
- Additional folding bed in portside guest cabin - not available in presence of double bed
- Safe (juwel art. 7826 Hotelrunner or equivalent) in all guest cabins and crew
- Bow cabins - filler cushions

Woods

- Wood as per Achille Salvagni "Moderno" style:
- Light wood: TABU R.54.15.26.58 - Opaque finishing
- Dark wood: Mahogany - finishing 100% gloss

Marble

Galley

- Top: Neolith Calacatta gold Polish
- Backsplash: Neolith Calacatta gold Polish

INTERIOR

- Master head (stbd): Top: gioia / Sinks:gioia / Shower bulkheads: gioia
- Guest heads: Top: gioia / Sink: gioia / Shower bulkheads + niche with spotlight: gioia
- Day head: Top: gioia / Sink: gioia
- Flybridge: Bar top: Silestone tigris sand
- Beach Area: Top: Silestone tigris sand

Floor

- Layout as per std Salvagni 35m
- Wooden floor as per std Salvagni 35m
- Carpet: as per sample selected during the meeting (refer to sampleboards and presentation)
- Galley, pantry and crew area: vynil as per 32-11 (refer to sampleboards and presentation)
- Credit for staircase to guest accomodation and wheelhouse in backlighted onyx
- No onyx for staircase (wood or carpet to be defined):
- Wood + strip led as per sample shown

Curtains

- Blackout curtains with rails (for total blackout)
- Rolling blinds in master's cabin and salon as per std
- Manual rolling blinds in lieu of venetian blinds in VIP cabins and guests' cabins
- Electric blackout curtains in salon

Heads

- Faucets and accessories as decor Salvagni std

ELECTRICAL SYSTEM

- 400V - 50Hz
- Upgrade of generators to Kohler 70kW/50 Hz
- n.6 underwater lights (Aqualuma gen 4 18 tri series) (due to the installation of the stern thruster)
- Dimmers for external lights (cockpit and flybridge)
- Spot lights on aft flybridge (recessed in the fibreglass)
- One Glendinning cable master (CM8, 20mt of cable length)
- Searchlight - additional on aft flybridge
- Water connection - bow, fly, beach, garage
- Internal switches with integrated led (led on when the light is on)
- Electric predisposition for pictures (owner's supply):
 - VIP cabins fwd bulkheads;
 - master's cabin fwd bulkhead stbd side stbd head door
 - salon n.2 columns between living and dining
 - Lobby LD

APPLIANCES

- Winecooler in pantry
- Microwave in galley
- Fridge in lower deck lobby
- Garbage disposal in galley
- 3rd fridge in pantry at the entrance (no storage and working top)
- Additional fridge in the flybridge bar cabinet
- Additional washer and dryer (not professional), option to be considered in case of std washer and dryer

ELECTRONICS AND NAVIGATION

- Upgraded navigation package Furuno - Gold Version
- Additional touchscreen alarms and boat management in crew mess
- AIS
- Fixed video camera in aft cockpit ceiling + zooming and pivoting videocamera in engine room (Panasonic system for Raymarine) connected to navigation displays
- Additional pivoting and zooming camera in aft cockpit o flybridge (Panasonic), connected to navigation displays
- Control of all cameras with Ipad (up to fou cameras)

AUDIO VIDEO

- Upgraded A/V package - Platinum version
- Additional speakers and subwoofer as follows:
 - n.2 speakers in beach area;
 - n.2 spakers + subwoofer in flybridge;
 - n.1 subwoofer in aft cockpit;
 - n.2 speakers in fwd cockpit;
- n.1 ipad
- Tv predisposition in cockpit + TV
- Tv predisposition in flybridge + TV
- A/V - control all with I pads
- Audio on sundeck

All speeds, measurements, capacities, consumptions, etc. may be approximate or estimated. Specifications provided for information only. Data was obtained from sources believed to be reliable and is not guaranteed by owner or brokers. Buyer assumes the responsibility to ascertain the correctness of all data contained herein and otherwise provided and must instruct his agent and surveyors to confirm all details for accuracy prior to purchase. Subject to prior sale, price and inventory change, or withdrawal from market without notice.

Disclaimer



For more information please contact: Niso Gado
+972-50-7644438 | niso@azimutyachts.co.il | www.azimutyachts.co.il